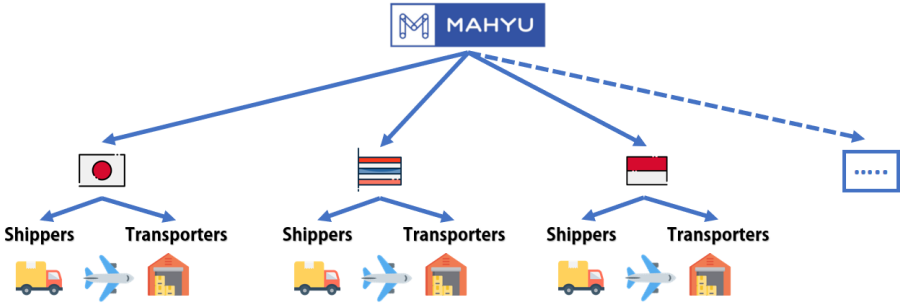


Mahyu: Revolutionizing the Logistics Industry

Overview:

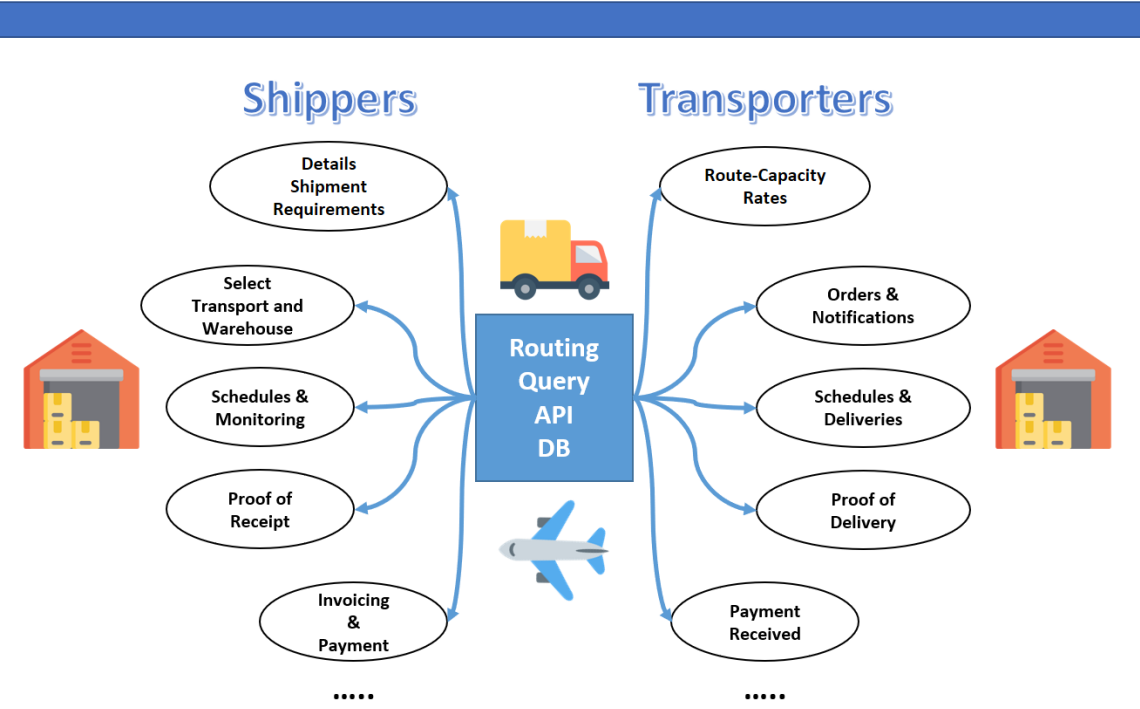
Mahyu is an innovative digital platform designed to streamline logistics for businesses, enabling seamless integration between domestic land transport, international air transport, eCommerce logistics, and warehouse management. Built with a focus on efficiency and transparency, Mahyu provides businesses with the tools they need to scale and optimize their operations without significant investment in new infrastructure.



Why Mahyu?

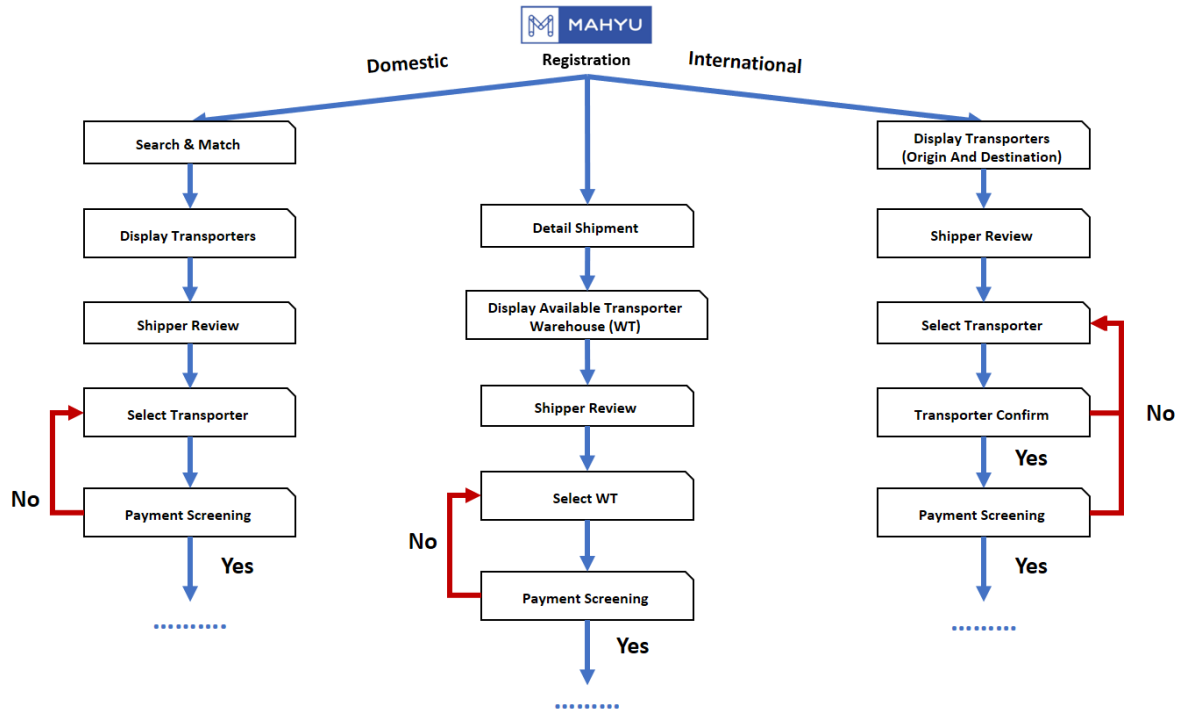
In today's fast-paced world, traditional logistics methods no longer suffice. Manual operations, paper-based workflows, and offline interactions lead to inefficiencies, delays, and increased costs. Mahyu transforms these outdated systems into a fully digital, real-time, and concurrent business environment. With Mahyu, you'll gain access to a unified platform that consolidates every logistics function under one roof.

Real time Interactions



The Power of Integration:

Mahyu seamlessly connects shippers, transporters, and warehouse operators, creating a harmonized ecosystem for logistics services. Whether it's domestic or international transportation, eCommerce logistics, or warehousing, Mahyu empowers users to manage their entire logistics chain from one centralized platform.



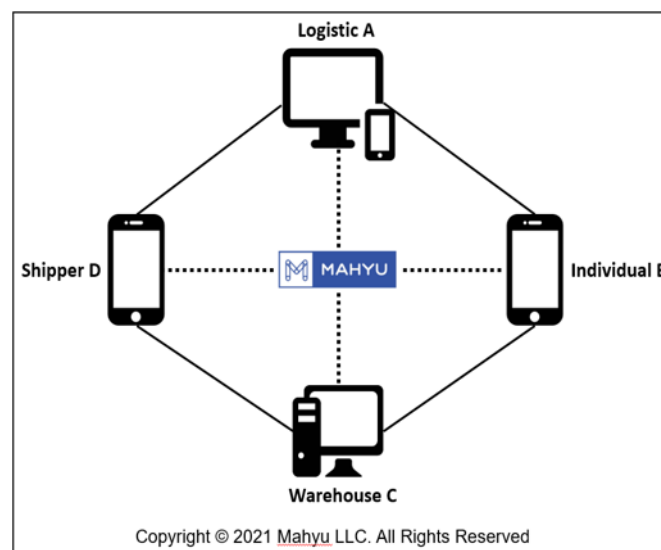
Key Features:

- Digital Transformation:** Convert paper-based administration into digital workflows, automate operations, and switch from sequential to concurrent business flows.
- Scalable and Flexible:** Cloud-based and scalable, Mahyu connects businesses of all sizes, ensuring real-time synchronization across operations, finance, and customer service.
- Advanced Algorithm:** Mahyu's algorithm configures and matches shippers with transporters based on real-time data, ensuring efficient scheduling, optimized routes, and faster response times.
- Domestic Land Transport:** This category is designed for transporters operating within specific country locations, users able to provide dedicated charter service, consolidated point-to-point destinations, with options for one-way or return trips.
- International Air Transport:** Users with a customs brokerage license can seamlessly integrate their vehicle resources with international air freight services, allowing them to efficiently handling import-export international shipments.

6. **eCommerce Logistics:** Designed to meet the growing demands of the B2C sector, Mahyu simplifies cross-border transactions by integrating customs codes and tax information, ensuring smooth international shipments.
7. **Warehouse Solutions:** From general storage to clean rooms and cold storage, Mahyu's integrated warehouse services provide comprehensive logistics support.

Mobile Integration:

Mahyu's mobile app delivers all critical operational details to drivers, from pick-up points to delivery routes. Each task is automated and tracked in real time, ensuring complete transparency and efficiency from start to finish.



Benefits of Mahyu:

- **Increased Efficiency:** Automate manual processes and reduce administrative burdens.
- **Real-Time Insights:** Get instant updates on transactions, shipments, and payments.
- **Global Reach:** Expand your business into international markets with minimal effort.

The Future of Logistics is Here

With Mahyu, logistics companies can transition into a borderless, digital world, allowing them to grow and adapt to the demands of modern business. Whether you're an SME or a large-scale enterprise, Mahyu offers the infrastructure you need to succeed.

