

Digital Logistics Network

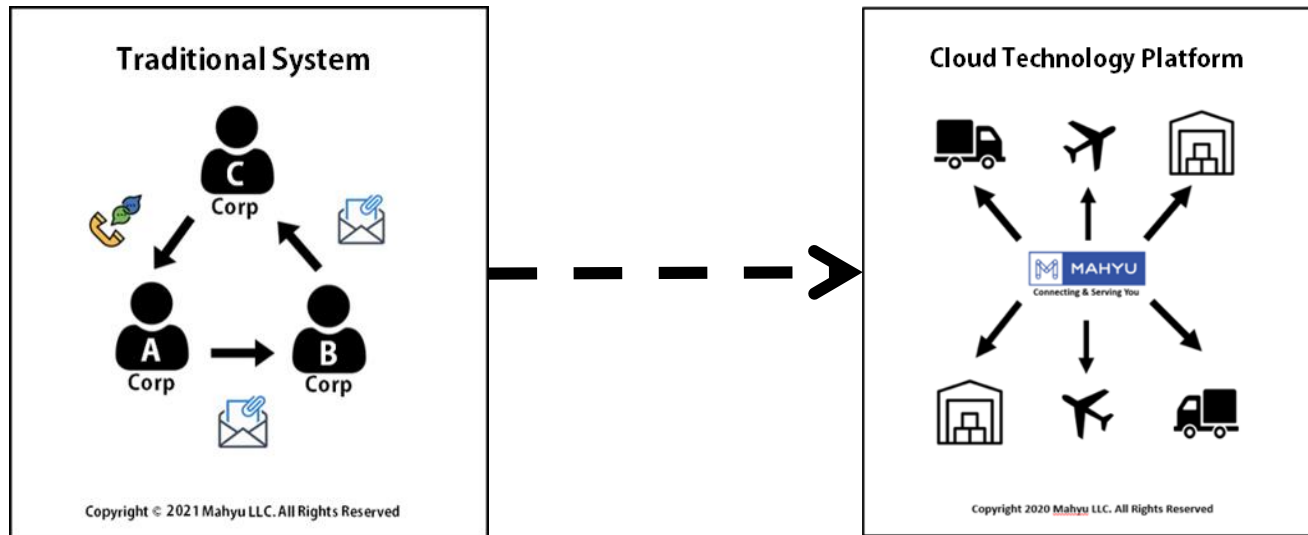
Summary Presentation



How technology plays a role in logistics industry

By: [Mahyu LLC](#)

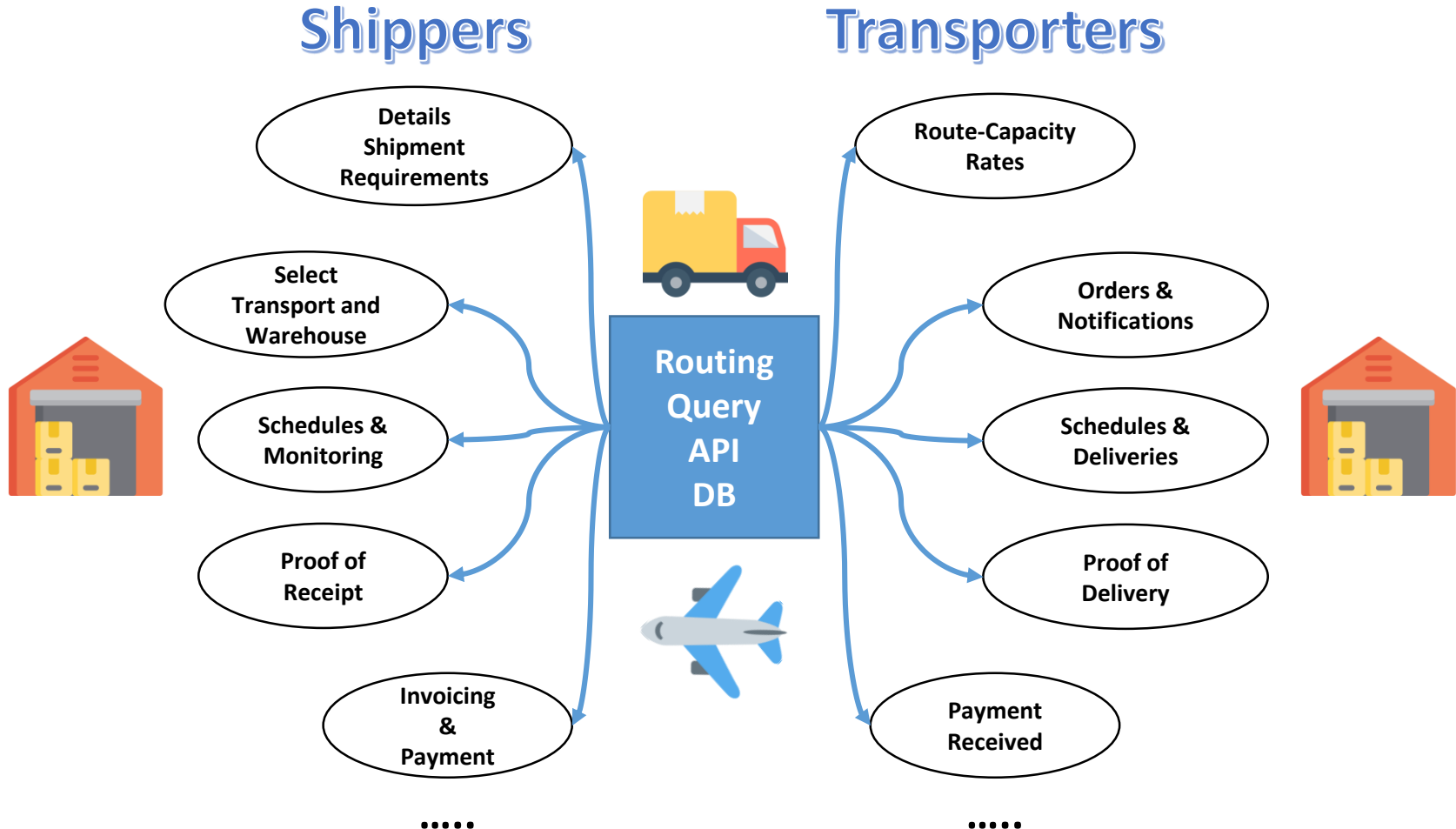
Cloud Technology in Logistics



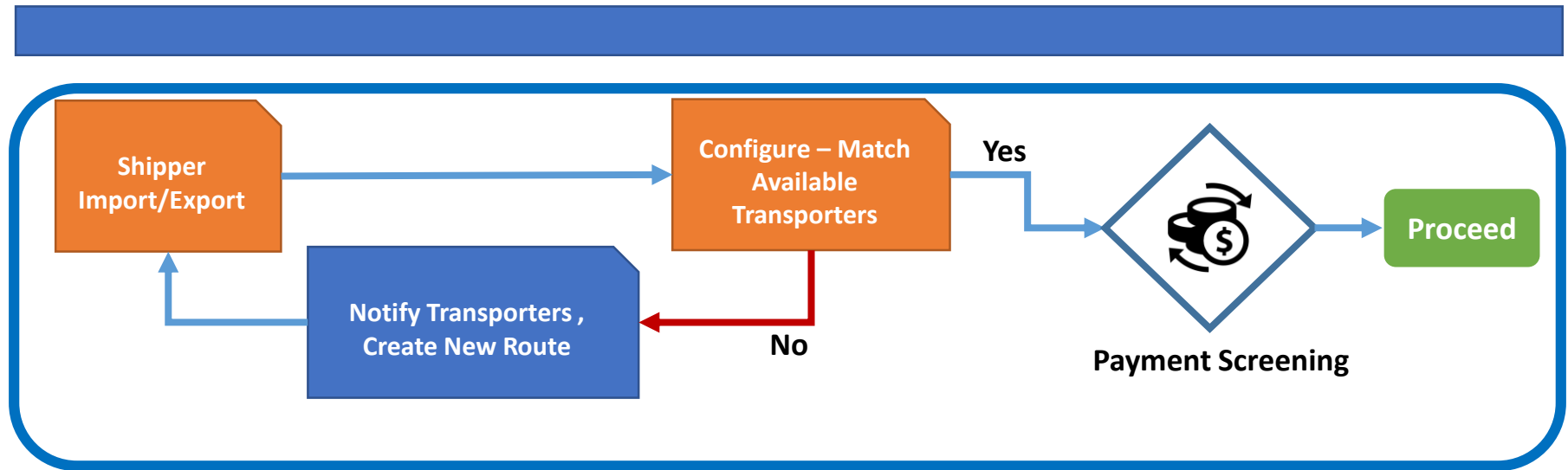
An improvement over the Traditional Model

- ❑ Logistics industry has been operating based on the traditional method: going one step at a time for each process.
- ❑ With Cloud Technology, transporters and shippers are able to conduct business transactions faster with less boundaries.
- ❑ Technology platform allows different sources to interact and conduct business simultaneously.
 - Each network area easier to follow and adapt to each country's requirements.
 - Offering an Integrated: Domestic and International of Air-Land and Warehouse Services.
 - Algorithm based system to match Shipper requirements and Transporter capabilities.
 - A new business model for : Business to Business and Business to Consumer (B2B & B2C).

Real time Interactions



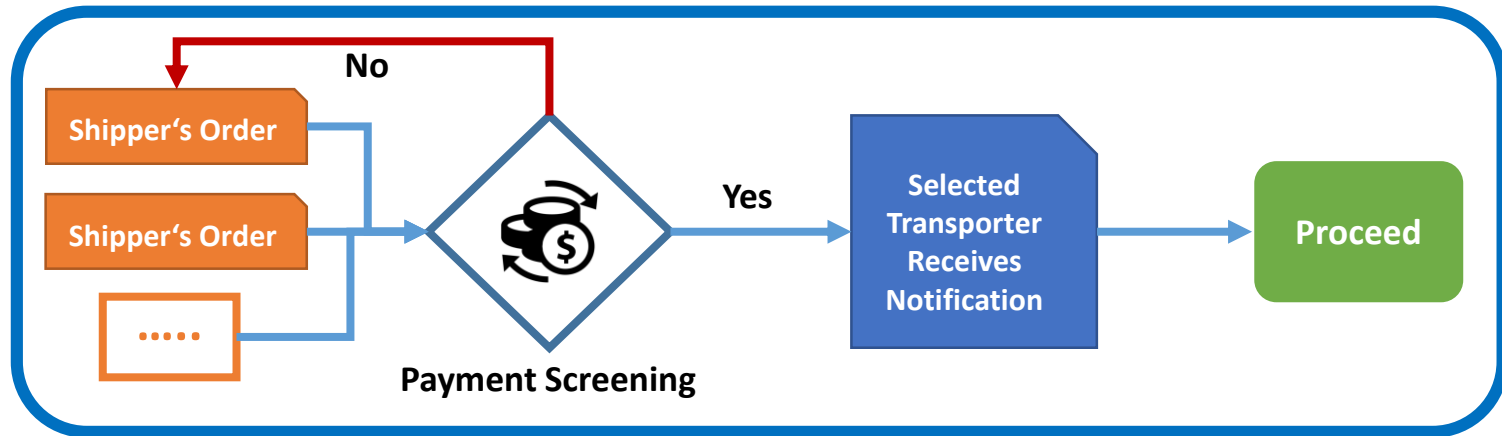
Benefit to Transporter (Land and Air services)



The most precious resource is a partner with the same interests

- ☐ Expand services with one network of Domestic and International partners.
- ☐ Detailed screening process of legality and qualification of services to improve business transparency.
- ☐ Collaboration in Sales-Marketing, cross sharing information for better business opportunities.
- ☐ Auto marketing notification of available return trip capacities.
- ☐ Speeding up for SME (Small & Medium Enterprise) to participate in Digital Global Economy.
- ☐ Standardized Digital Financial, Administration, Operational and Customer Services results in faster business decision making and collect payment quickly.

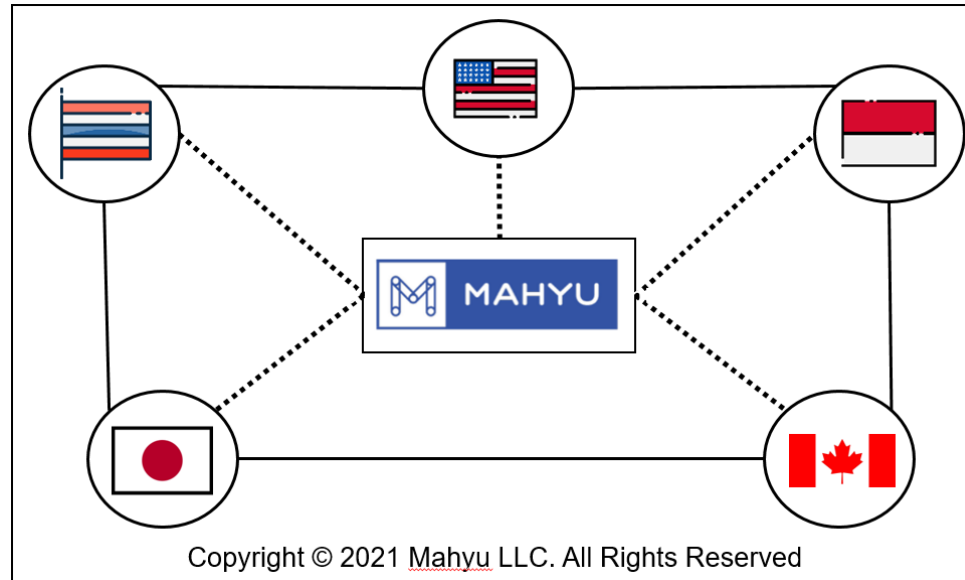
Benefit to Shipper



Technology is an important aspect of our daily life

- ☐ Easy to find Transporters that are located around you, 24 hours -7 days a week.
- ☐ Review of each transporter's criteria: Prices, Schedules, and Qualifications before final selection.
- ☐ Real time notification of HS code restrictions to better inform Import-Export shippers of potential problems.
- ☐ Opportunity for Shippers in isolated areas to participate in the Digital Economy.
- ☐ Ease in monitoring Progress from: Pick up at origin to Delivery at destination.
- ☐ Security Identification procedures to prevent mistaken identity.

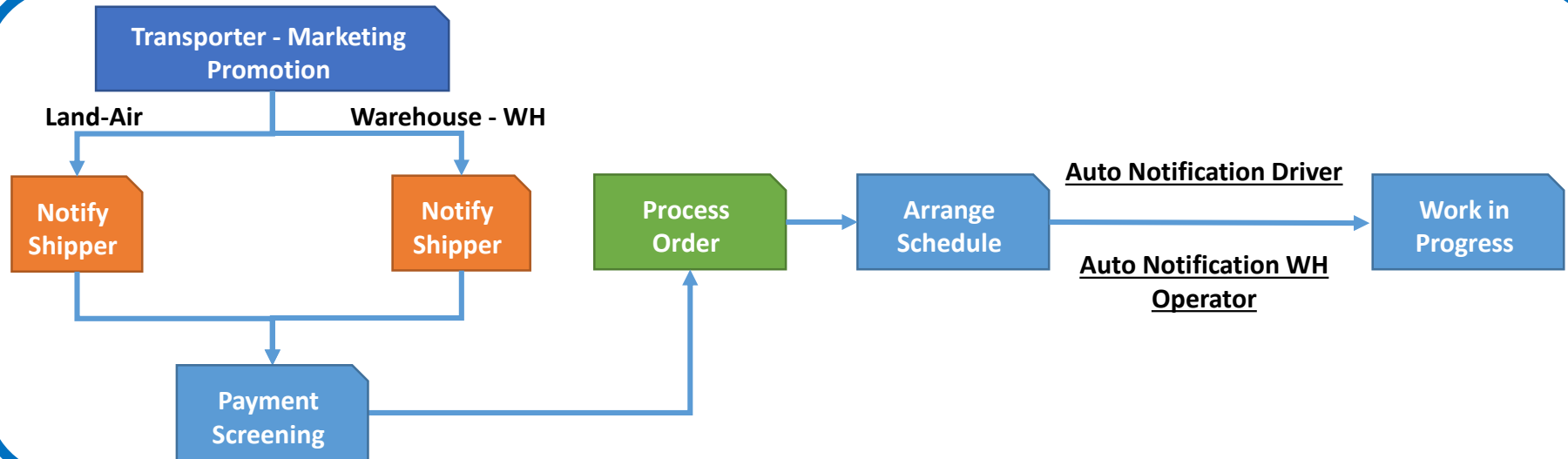
Benefit to Transporter (Warehouse Services)



One of important service in Supply Chain Network

- ☐ Open up opportunity to market Warehouse Services (General, Cold and Dust Free storage) to Global Ecommerce Shippers.
- ☐ Online management system to monitor product schedules from start to finish date.
- ☐ Reduce bottleneck by Integrated information distribution of Transport and Warehouse services.
- ☐ Replace repetitive warehouse tasks to minimize mistakes and to save cost.
- ☐ Auto configuration and marketing notification once space capacity is available.

Efficiency in Operation

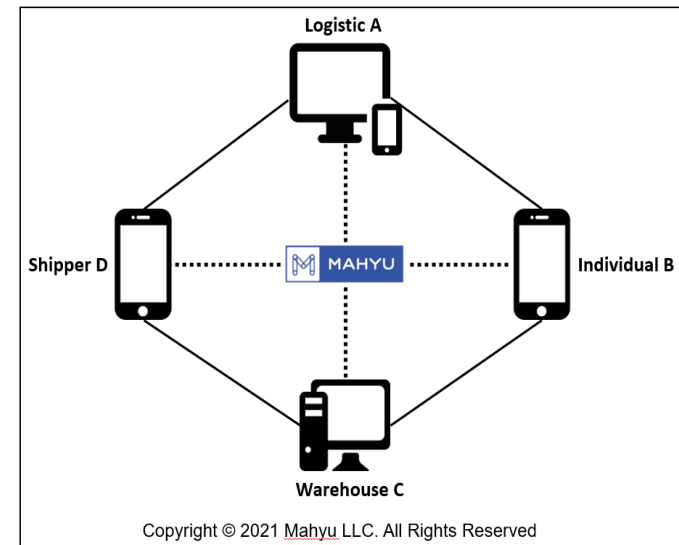


An algorithm system based on human learning experiences

- ☐ Auto notification to each user involved in multiple operating system devices.
- ☐ Real time information distribution of Sales-Operation-Finance-Administration to multiple channels and span of continents.
- ☐ Auto configuration of marketing and sales, to minimize third party commission fee.
- ☐ Information on Customs Clearance simultaneously distributed to Operation and Administration operators over different time zones.
- ☐ Automatically process incoming orders with verification, notification and confirmation.

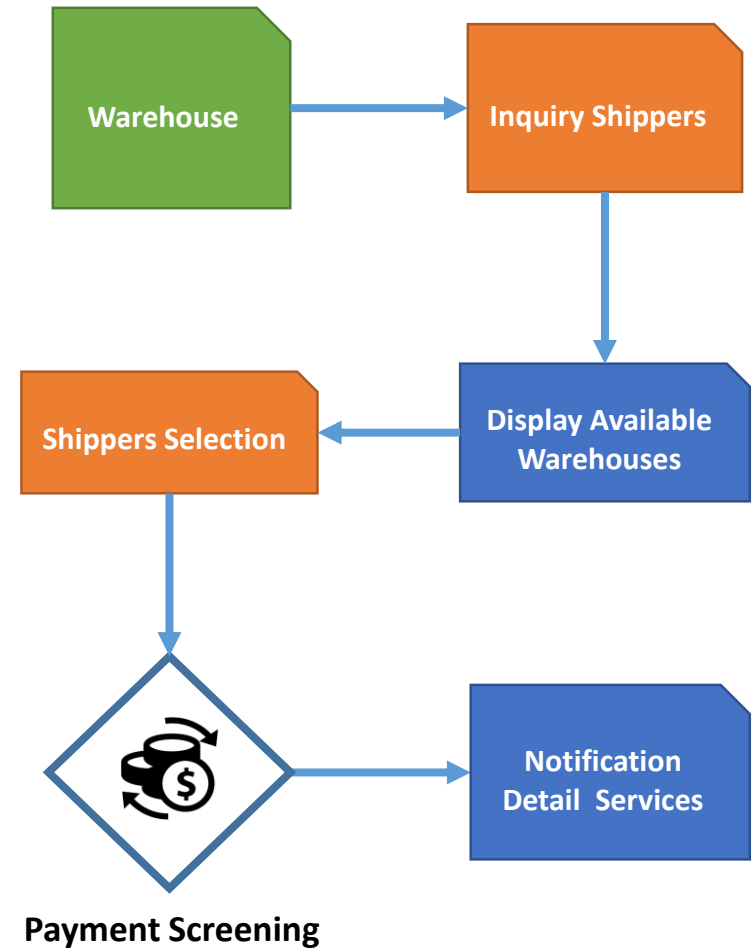
Digitization Logistics Functions

- ☐ User identification-verification.
- ☐ Location pin point verification.
- ☐ Sales-marketing Domestic-International network of companies.
- ☐ Locate-Configure and Match requirements and services.
- ☐ Negotiate and book transportation-warehouse services.
- ☐ Issue shipper-transporter order schedule confirmation.
- ☐ Direct chatting point to point feature.
- ☐ Daily-weekly schedule build up.
- ☐ Operation and administration pre-alerts.
- ☐ Auto issue pre-invoice to reduce miscommunication.
- ☐ Pending transportation route notifications.
- ☐ Issuance of a domestic pick up delivery schedule.
- ☐ Detailed customs charges at origin and destination.
- ☐ Integrated notification center.

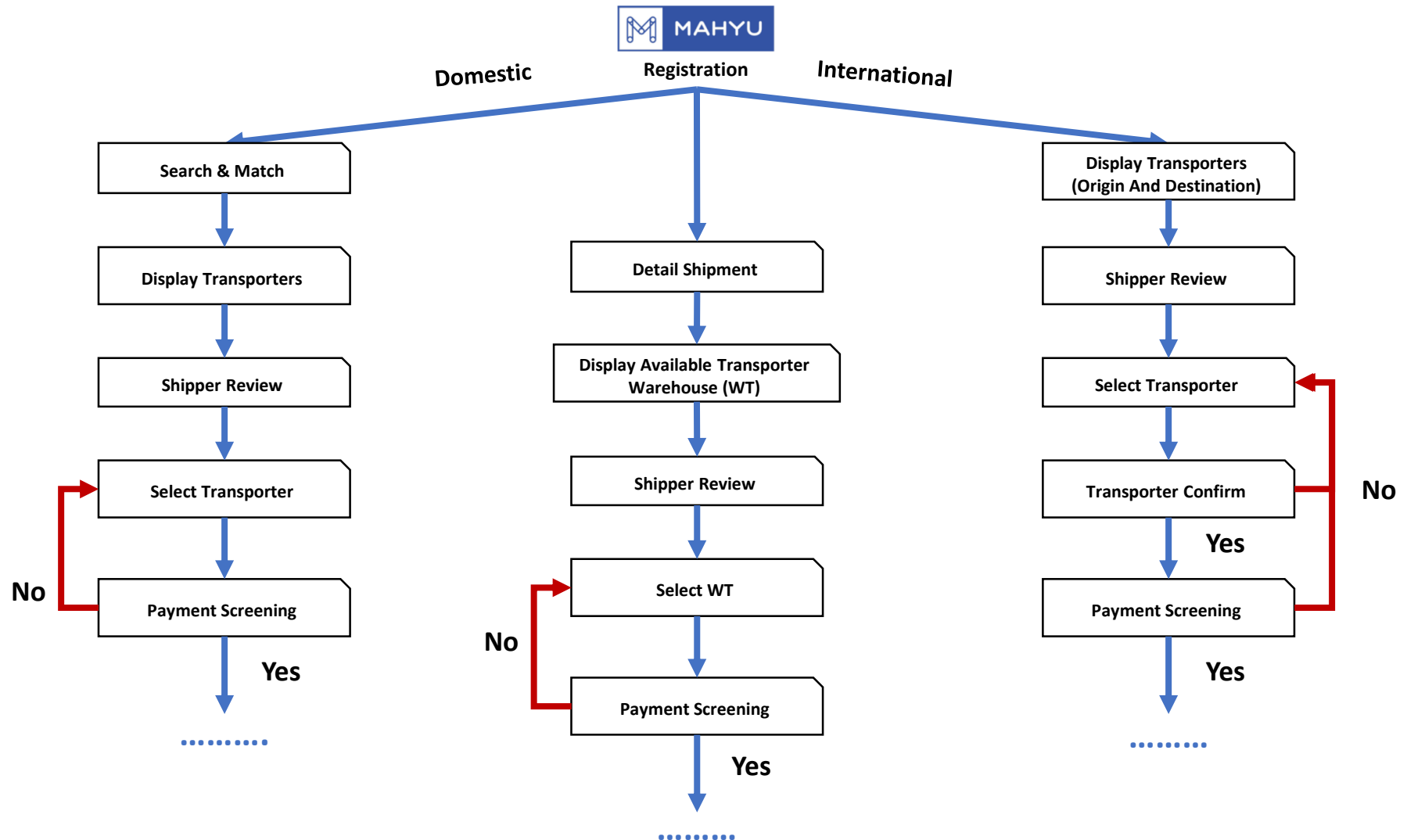


Digitization Logistics Functions

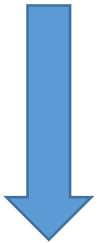
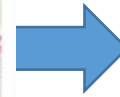
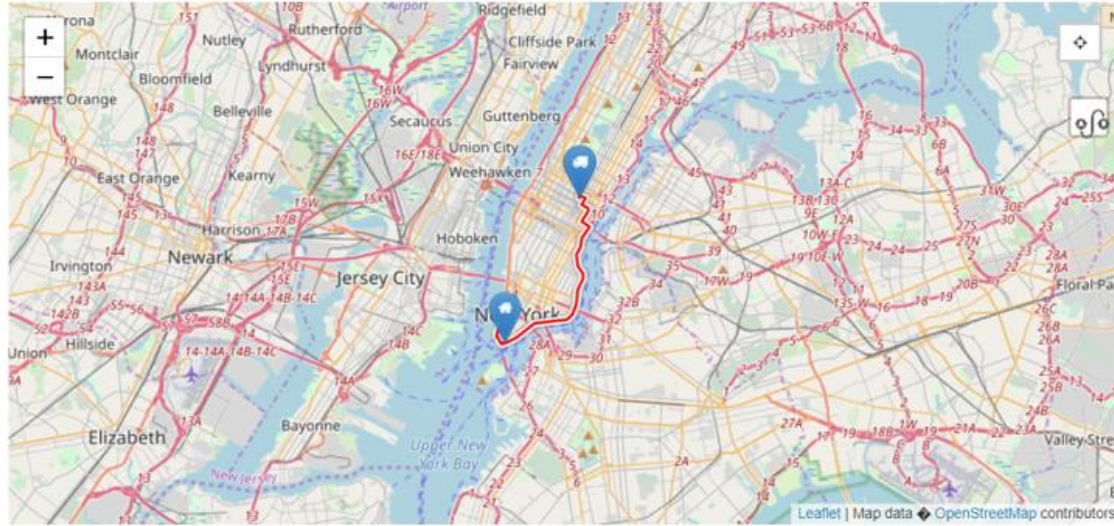
- ☐ HS code import-export restrictions notification.
- ☐ Warehouse configurations.
- ☐ Warehouse space allocation confirmation.
- ☐ Inventory management report.
- ☐ Pickup and delivery route instruction.
- ☐ Monitoring and tracking system.
- ☐ Digital financial screening and approval.
- ☐ Proof of pick up and delivery receipt.
- ☐ Issuance of final invoice.
- ☐ Auto payment processing.
- ☐ Pickup and Delivery verification.
- ☐ Auto payment verification.
- ☐ Currency setting-link to real time foreign exchange.
- ☐ Administration and User profile settings + procedures.



Inquiry-Respond-Process Flow



Mapping Technology

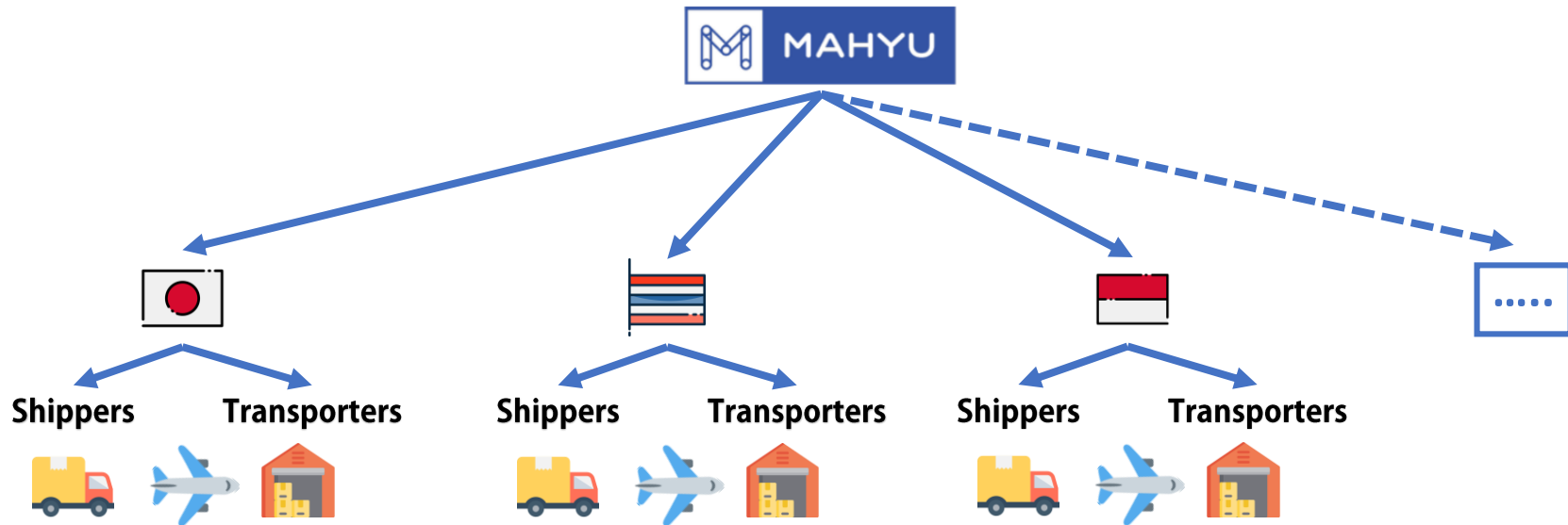


A Geo-Location to assist user

- ☐ Real time pin point of each vehicle's location at every stage of transaction.
- ☐ Real time pickup and delivery receipts.
- ☐ Paperless location and operation instructions information.
- ☐ Essentially, almost all Logistics Functions and its Infrastructure are performed and taken over by "Cloud Technology Platform".



One Network with Same Interest

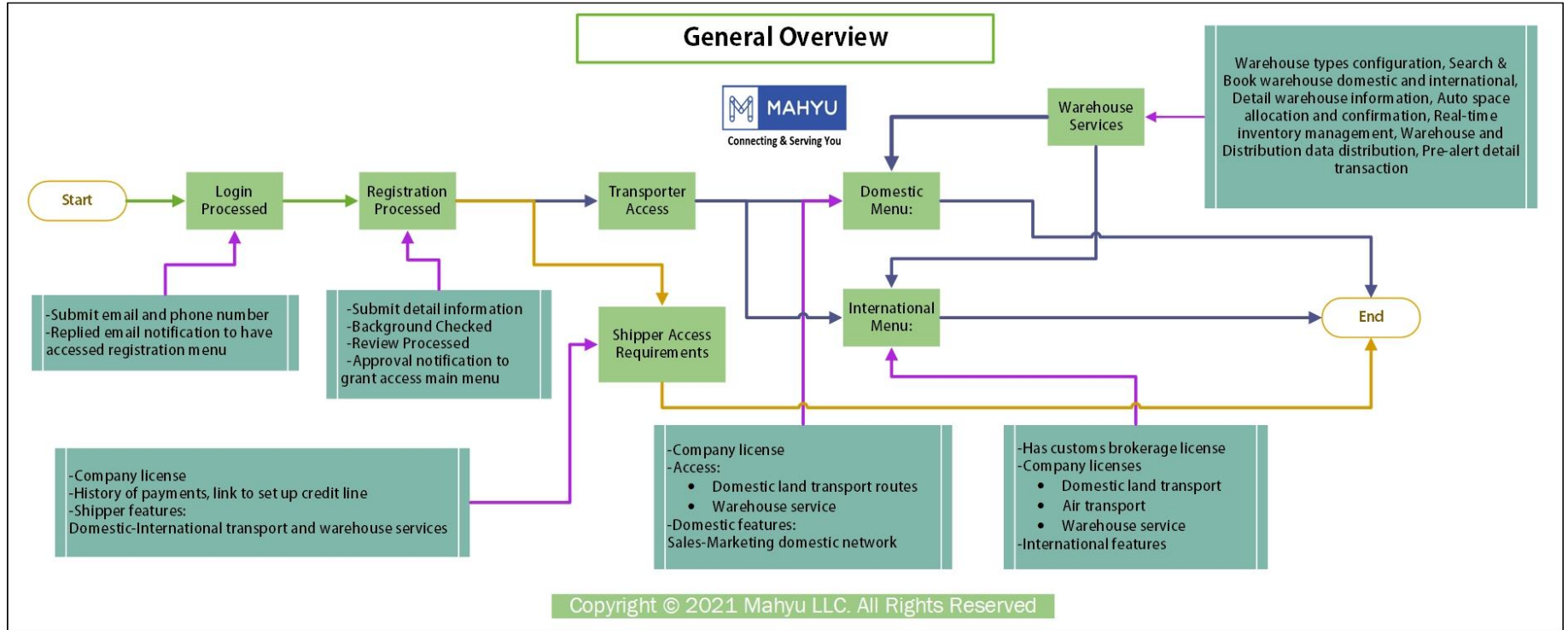


Administration and Setting menu:

- ❖ Verify invoice payment
- ❖ Credit limit approval
- ❖ Transporter verification registration processed:
 1. Verify local license
 2. Business license
 3. Customs brokerage license
- ❖ Shipper verification registration processed

- ❖ Setting options:
 1. Currency symbol
 2. Country currency
 3. Airport code
 4. Airline code
 5. Aircraft type
 6. Flight number
 7. Import HS code
 8. Export HS code

Comprehensive Solution



Thank You!



Connecting & Serving You

[Mahyu LLC](#)

info@mahyu.com